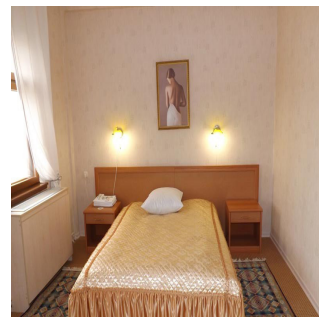
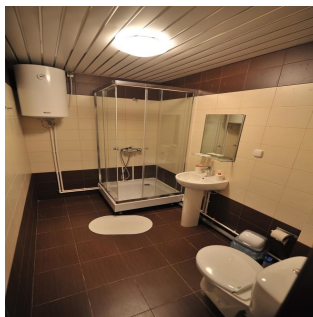
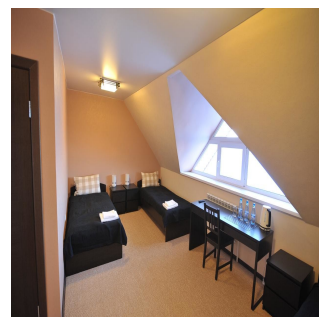
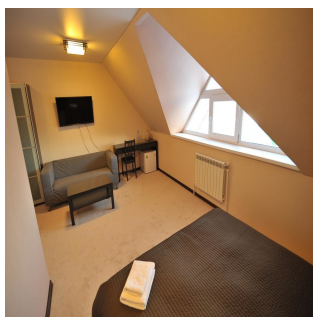


# Secrets of Arctic tundra

Ethnotour to Yamal



Nowadays when it is possible to reach the farthest corners of the world, you have a chance to see Yamal. This isolated Arctic region in Siberia keeps secrets of Nenets — indigenous people who live in the Far North for 2000 years. Reindeer give them food, home and transport. You will have a unique experience of taking part in the daily lives of nomads far above the Arctic circle.

# Experiences you'll have

## Journey to the camp of Nenets

The Nenets are reindeer herders who migrate across the Yamal peninsula. For thousands of years they have survived heavy frost and severe conditions of Arctic tundra. Temperatures in this part of Russia reach -50°C. Distance that herders’ families travel annually is up to 1000 km. As this indigenous tribe from Far North is dependent on nature, they believe that every plant and animal have a soul and worship their spirits.

You will join the Nenets reindeer herders' family for the several days during their migration and find out, what the nomad life in the extremely harsh Artic conditions looks like

Living together with Nenets on «the edge of the world» will let you become a part of culture that stayed unchanged for several centuries. Sleeping in rawhide tents called chums, putting them down and taking up while travelling to new pastures, working with reindeer — by immersing yourself in this way of life you will acquaint with ancient traditions.

**Note:** for group of up to 2 people, the cost will be 3520 EURO per person. We can organize this tour at any days suitable for you.

## Itinerary

The journey starts in Salekhard, where you should travel to on your own. The shortest way to get to Salekhard from Moscow is by 3 hours flight. Trip by train «Polar Exspress» takes 2-2,5 days. The train arrives to the Labytnangi railway station. We are ready to help you with the purchase of tickets. If necessary, leave a comment on the application.

Note: there will be no fixed itinerary for the days in the nomad camp. Activities will depend on weather and other factors.

### Day 1

#### You will be met at the airport of Salekhard or Labytnangi

railway station and taken to the hotel. Here you will check in and rest.

### Day 2

#### Today you will have Salekhard city tour with visiting the

local lore museum and Obdorsk Burg. You will see "66 Parallel" monument, can take photos near a mammoth as well as visit the local market. This city tour will get you an opportunity to learn more about the history of Yamal region and traditions of the local peoples.

### Day 3

#### Travel by TREKOL (all-terrain vehicle) to Yar-Sale village is

waiting for you today (6-10 hours). On the way you will take photos of landscapes and have tea in the open air. Upon arrival to Yar-Sale village you will stay overnight in a hotel.

### Day 4

#### Today you will go with TREKOL or on snowmobiles through

tundra to the Nenets camp (60-90 km, 3-5 hours). The brigade consists of 8 people with children and has 5 chums (tents) and approximately about 5 500 reindeers in a herd.

#### Upon arrival to the camp of reindeer herders you will meet

the family of reindeer breeders. From today you will live in traditional chums (rawhide tents). In the evening you will enjoy dinner with national Nenets cuisine.

### Day 5

#### After breakfast you will ride snowmobiles to tundra to the

place where a herd of reindeer is grazing. This day you will work

### Most popular

Yamal

## Secrets of Arctic tundra

Difficulty   
Group size from 2 to 6  
Duration 11 days

Accomodation at the trip



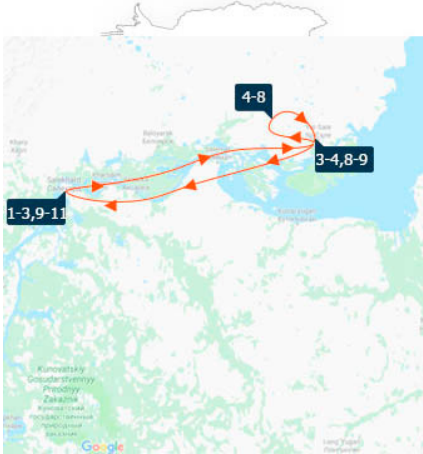
6 nights 4 nights

Языки



guide guide

from 2 600 EUR



with reindeer herd and learn how to use a lasso for catching these animals as well as how to drive a team of reindeer. In the evening you will come back to the camp, taste national cuisine for dinner and rest.

#### **Day 6**

#### **Today you will work with the herd, collect firewood and ice**

and prepare to nomad. You will get acquainted with the arrangement of the winter camp of reindeer herders. Learn about the traditional technique of installing the rawhide tents and about its interior decoration.

#### **You will visit chums of neighbors as well and will listen**

stories about the everyday life of reindeer herders, their traditions and customs.

While you are staying in camp, the nomads will go about their daily lives as usual, as if you were not there with them, but inviting you to come and watch or help. If you manage to earn their trust, Nenets can tell you stories and talk about their lives, thoughts and spiritual beliefs.

#### **Day 7**

#### **Together with the herders' family you will take chums**

down and will start to nomad. After finding the new place you will put chums up there.

#### **During your week stay you will observe the process of**

"Kaslanie" when Nenets will move their camp for several km just in 1 day. First dogs drive the reindeer herd so that they stream around the edge of the camp in an arch for an hour or two. When herders see the animals they need (they can recognise them all) they lasso them and draw them in. When all the sledges have attached to the reindeers, they sets off. Moving of the reindeers and dozens of sledges turns a white tundra landscape into brown.

#### **Day 8**

#### **Today you will come back to Yar-Sale village where you will**

stay in the hotel.

#### **Day 9**

#### **This day you will return to Salekhard. All-terrain vehicles**

TREKOL will be used in the trip. In the city you will be accommodated in the hotel.

#### **Day 10**

#### **This day will be used as an extra day in case of bad**

weather.

#### **Day 11**

#### **On the final day you will fly back to Moscow.**

#### **It is necessary to check the schedule in case you are**

having a trip by train. Trains do not go to Moscow every day.

## **Accomodation at the trip**

In Salekhard you will stay at "Hotel 89 ", located in the city center (for days 1-3, 9-11). Every room comes with a private bathroom fitted with a shower, a TV with cable channels and free Wi-Fi.

In Yar-Sale village you will spend 2 nights (days 3-4 and 8-9) in "Yalamd" hotel. There are rooms of different categories, a restaurant, a

sauna and a pool in the hotel.

For 4 nights (days 4-8) you will live in the national raw-hide tents in reindeer herders’ camp (4-5 person accommodation).

# FAQ

## What to bring

**Recommended equipment:**

- comfortable loose-fitting warm clothes, as you will spend quite a lot of time outdoors.
- comfortable shoes without heels
- a camera and a charger for your camera and cell phone.
- personal hygiene supplies

**For snowmobile rides:**

- two sets of thermal underwear
- winter overalls that can keep you warm in temperatures as low as - 35°C
- warm shoes
- a hat, mittens, a balaclava, and glasses (sunglasses will do)

## What weather there will be

In the period from December till March temperature varies from 0°C to - 35°C. There can be snowfalls and blizzards. In December it is a polar night and a daylight is only 2-3 hours long. From January the daylight starts increasing. You can see the Northern Lights till the end of March (when the weather permits).

# Booking

Yamal

Secrets of Arctic tundra

Most popular

Difficulty

Group size

Duration

from 2 to 6

11 days

Accomodation at the trip

6 nights 4 nights

from 2 600 EUR

What's included in the price:

— hotel accommodation in Salekhard and Yar-Sale

— accommodation in traditional rawhide tents (chums)

— full board for the hole duration of the program

— meeting at the airport

— all transfers according to the program

— activities according to the program

— visits to the museums of local lore in Salhekhard and Yar-Sale

— Salekhard city-tour

— professional English/French speaking guide for the whole duration of the program

— necessary formalities to obtain authorization

Extra charge:

— train tickets or [airfare to/from Salekhard](#)

— meals in Salekhard

for visiting frontier zone



Best price  
guarantee



Personal  
tours



Discounts for  
regular clients



Gift  
cards