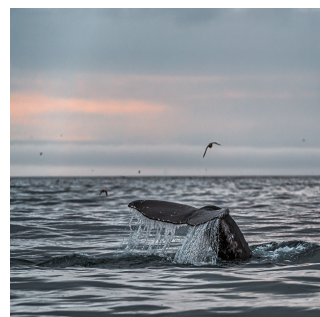
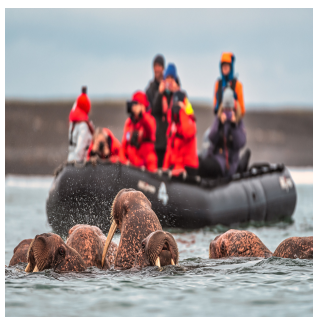




Jewel of the Russian Far East

Chukotka, Kamchatka and the Commander Islands



Three fantastic regions in one voyage. The most isolated and inaccessible islands of the Far East. The richest marine fauna and diverse natural landscapes: from The Ring of Fire's volcanoes to blooming tundra. We invite you on the cruise from Kamchatka to Chukotka via the Commander Islands.

Experiences you'll have

Cruise to the Russian Far East

You will explore the most hard-to-reach places of the Russian Far East on a comfortable expedition vessel. Sea trips on zodiac boats will alternate with walks on uninhabited islands accompanied by qualified guides and experts of the regions. Lectures and movies about the nature, history, and culture of Kamchatka, Chukotka, and the Commander Islands are waiting for you on board.

On this cruise, you will daily enjoy gourmet meals from a Michelin-starred restaurant's chef

The reasons to join this cruise:

exploring 3 unique regions in one journey: the Commander Islands, Kamchatka, and Chukotka
watching whales, walruses, brown bears, and rare seabirds: puffins, red-faced cormorants, spoon-billed sandpipers, white-tailed eagle
capturing the Arctic tundra, Kamchatka volcanoes, green fjords, and impregnable basalt cliffs
visiting Meynypilgyno and Nikolskoye, remote villages where the locals have preserved the traditional way of life
relaxing in Goven hot springs in the middle of a picturesque lagoon, surrounded by cliffs, glaciers, and green slopes

The cost of the cruise depends on the selected cabin type. See details in the Accommodation section.

Kamchatka

Jewel of the Russian Far East

Difficulty 
Group size to 50
Duration 11 days

Accomodation at the trip



10 nights

Языки



guide

from 495 000 EUR

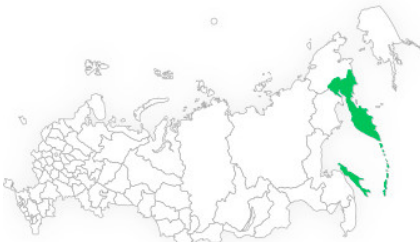
Itinerary

The August 2-12 journey starts in Petropavlovsk-Kamchatsky, where you should get to on your own. Please note that return tickets must be taken from Anadyr, where the cruise ends.

The September 11-21 journey will sail in the opposite direction.

We can help with the purchase of tickets, if necessary, leave a comment in the application.

This is a general plan of the expedition, the route may vary depending on the weather.



Day 1

After meeting at Petropavlovsk-Kamchatsky airport, a

group transfer to the port will be organized. You will board the vessel, settle into the cabins, and get acquainted with the ship's crew. Then you will leave the world's largest natural harbor, Avacha Bay, and enter the Pacific Ocean.

On the left side, you can see the "home" volcanoes of

Kamchatka: Avachinsky, Koryaksky, and Kozelsky. By the end of the day, you will have a view of Zhupanovskaya Sopka, the massif of 4 volcanoes.

Day 2

The ship will head northeast and early in the morning stop

at the mouth of Zhupanova River, one of the best Kamchatka's fishing spots.

On expedition boats, you will travel up the river. Here you

will try your luck at fishing for rainbow trout. You can also catch pink salmon, coho, chum, grayling, chinook salmon, or char. There is a chance to see *Steller's sea eagles*, the largest eagle on the planet. The wingspan of these birds reaches 2.5 m. Bears feeding on spawning salmon are also often seen here.

In the afternoon, the ship will set a course for the

Commander Islands. During the 20-hour crossing, expedition team members will tell you about the nature and history of the archipelago. Passing through Kronotsky Bay, you can meet gray whales and admire the views of several volcanoes, including Kronotsky Sopka.

Day 3

For 4 days you will explore the Commander Islands. They

were discovered in 1741 by the expedition of Commander Vitus Bering, after whom they were named. You will visit all 4 islands of the national park and admire the diverse landscapes with numerous waterfalls and miles of sand dunes.

The exploration will start by visiting the only settlement on

the Commander Islands, Nikolskoye. The local museum is one of the few in the world where you can see the skeleton of a steller's cow, completely exterminated by man in the 18th century. You can look for semi-precious stones on the local beach and Arctic berries in the tundra.

You will visit Commander's Bay, where the graves of Vitus

Bering and several members of his expedition are located. The discoverers, who reached the islands already sick and exhausted, could not survive the difficult winter.

There is a huge variety of sea mammals on The

Commanders, which is a record for Russia. On the Northwest Cape of Bering Island, you will see a large colony of Steller sea lions and fur seals, meet sea otters and rare Steineger's seals. The waters off the southern coast of Bering Island are home to many cetaceans: sperm whales, fin whales, humpback whales, northern minke whales, and orcas.

The expedition boats will take you to the bird colonies of

Toporkov and Arii Kamen islands. Even if you are not interested in ornithology, you will not be indifferent to the noisy colonies of birds. Here you can see the most beautiful birds of the Far East: *tufted puffin*, *horned puffin*, and *red-faced cormorants*. While walking on Toporkov Island, it is important to be very careful not to damage bird burrows.

Day 4

Moving northward, you will approach Chukotka through

the vast Bering Sea. Your companions will be whales and sea birds.

These two days can be spent observing the sea, sharing impressions, and talking with the expedition team.

Day 5

Today the ship will approach Pavel's Bay, a long curved

fjord with high green hills. Nearby is Peter's Bay. You will find yourself surrounded by fantastic mountain landscapes and tundra full of berries. Snow sheep and brown bears are often seen here.

On zodiacs, you will sail closer to the rookeries of *Pacific*

walruses on Bogoslova Island, located between two bays.

In the afternoon, you will explore Tintikun Lagoon,

separated from the sea by a sand spit and surrounded by cliffs, glaciers, and green slopes. After cruising around the lagoon on

expedition boats, you will land on an island in the center of the lagoon and bathe in the Goven hot springs.

Day 6

In the first half of the day, you will go by expedition boats

to the high rocks. Numerous waterfalls come down into the sea from their tops. In the vicinity of Meynypilgyno village, you will see a large walrus rookery. Also, you are likely to meet brown bears and gray whales in these places.

Maina, as the locals call the village, has a very unusual

location. It is situated between two lakes and separated from the sea by a river and a spit. There is a museum of Chukchi culture in the village. Not far from the settlement, a large population of the *spoon-billed sandpipers* spends the summer. This species is on the verge of extinction. A special incubator was built near Meynypilgyno, where international ornithologists breed babies of these rare birds to release them into the wild.

Passing along the western shore of Anadyr Bay, the vessel

will reach Navarin Cape, the windiest place in Russia. More than a million birds live here on the high shores and rocks adjacent to the cape. If you are lucky, you can see the *white-tailed eagle*, the rarest species. There is a good chance of seeing whales in the coastal waters.

Day 7

Today the vessel will arrive in Anadyr, the capital of

Chukotka. In Anadyr Bay, you will surely see beluga whales.

From the port, you will be transferred to the airport for

your return flights.

Accomodation at the trip

Your voyage will take place on the **expedition ice class vessel "Professor Khromov"**.

The vessel is specially equipped for navigation in places where passage of larger vessels is impossible. The ice class of the vessel allows cruising in polar regions.

Facilities on board: bar, restaurant, lounge, library with a collection of thematic literature, lecture hall, sauna. Access to the navigation bridge, wildlife, and marine life viewing from open decks.

Rates depend on the type of cabin:

- Triple, shared bathroom – 495 000 RUB (5,717 USD) per person
- Double, shared bathroom – 554 400 RUB (6,403 USD) per person
- Superior – 702 900 RUB (8,118 USD) per person
- Superior Plus – 806 850 RUB (9,318 USD) per person
- Mini Suite – 1 103 850 RUB (12,748 USD) per person
- Owner's Suite – 1 336 500 RUB (15,435 USD) per person

The base rate is in RUR. The price in USD depends on the exchange rate of the [Central Bank of Russia](#) minus 2% and is valid as of January 18, 2024. The price is per person with double occupancy in a cabin.

A 50% prepayment is needed to make a reservation. The remaining 50% must be paid 120 days before the cruise starts.

Cabins Description:

Triple (12 sq.m.) three lower and one upper berth, porthole, desk, closet, bedside tables, washbasin. The toilet and shower are on the deck.

Double (12 sq.m.): two lower bunks, sofa, porthole, desk, closet, bedside tables, washbasin. The toilet and shower are on the deck.

Superior (12 sq.m.): upper and lower berth, sofa, window, desk, closet, bedside tables, shower, toilet, and washbasin.

Superior Plus (12 sq.m.): two lower berths, sofa, window, desk, closet, bedside tables, shower, toilet, and washbasin.

Mini Suite (18 sq.m.): bedroom with double bed, living room with single bed, windows, TV, desk, closet, bedside tables, shower, toilet, and washbasin.

Owner's Suite (27 sq.m.): double bedroom, living room with single bed, sofa, TV, fridge, closet, windows on the bow and sides of the ship, shower, toilet, and washbasin.

FAQ

Who will be my guide

The group will be accompanied by an expedition team: tour leader, guides and lecturers.

Meals

The cost of the tour includes a full board: breakfast – buffet, lunch – main course, salad and dessert, dinner – main course, vegetables and dessert. An alcohol menu is available for dinner.

Chef can prepare meals according to your diet if you inform us in advance.

What to bring with me

When choosing clothing and footwear, take into account the peculiarities of the Arctic region. Temperatures can drop below freezing at the northern points of the route. Sometimes there are no landings on the shore and the boats go along the shore.

Keep in mind that it can be very windy on the coast, this adds to the temperature effect. There will be splashing on the boat even in small waves, so clothing should be **waterproof** and **windproof**. The main heat loss occurs through the head, arms, and legs – pay maximum attention to these places. We recommend taking a camping seat with you. Don't forget about equipment: you need a waterproof case for shooting in rain and drizzle.

Clothing: warm pants, waterproof pants, thermal underwear, sweater, turtleneck, wool hat covering ears, balaclava/scarf, warm socks, waterproof hooded jacket. You can bring dressy clothes for the farewell party (heeled shoes are not recommended).

Footwear: trekking boots (not compulsory, but recommended for long walks on the shore). If you prefer trekking boots to rubber boots, you should bring them with you in your backpack and change them on the shore. Boots with grooved soles will give you the most stable footing. Rubber boots are also necessary, but they can be given free of charge on the first day of the cruise. It is important to bring warm insoles with you. If you plan to bring your boots, they should be mid-calf height or higher with thick ribbed non-slip soles. Some landings will require stepping into water up to 25 centimeters deep. It can also be quite slippery on the ice and on

the shore. Make sure the boots fit comfortably with a wool sock. You will also need sandals, sneakers, or any other comfortable shoes for the ship, and flip-flops for the shower.

Other: a small backpack for landings (preferably waterproof), warm and waterproof gloves, sunglasses, cream (in windy weather preferably greasy nourishing), lipstick, binoculars, earplugs, swimsuit (for baths, hot springs, and optional bathing in the ocean), towel.

Documents: passport, boarding pass (issued in advance or mailed), airplane ticket, copy of insurance.

Medical insurance

This journey requires medical insurance to cover emergency evacuation from inaccessible and remote locations. It is not included in the tour price and is paid additionally. We are ready to help with its registration, if necessary, leave a comment on the application form.

Booking

Kamchatka

Jewel of the Russian Far East

Difficulty

Group size

Duration

to 50

11 days

Accommodation at the trip

10 nights

from 495 000 EUR

What's included in the price:

— shipboard accommodation in a cabin of the chosen category

— meals (full-board)

— group transfers between airports and ports according to the program

— all excursions and landings as per program

— English-speaking guides services

— lectures and presentations on board

— all required permits and registrations

— information packs sent to participants before the journey

— expedition jacket

Extra charge:

— [airfare to Petropavlovsk-Kamchatsky and from Anadyr](#) or in reverse

— mandatory medical insurance with emergency evacuation coverage

— visa

— service before and after the cruise (hotel, meals, optional excursions)

— personal expenses, laundry, bar, and communication services on board

— tips (optional)

Best price guarantee

Personal tours

Discounts for regular clients

Gift cards